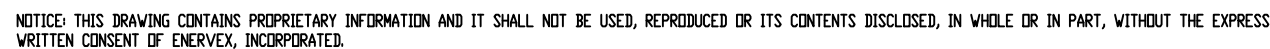


1. WIRING INFORMATION IS SUITABLE FOR ENERVEX MDVS315x AND MDVS355x.
2. FOLLOW EQUIPMENT MANUFACTURER'S INSTRUCTIONS FOR PROPER INSTALLATION OF FAN AND CONTROLS. STACK PROBE LOCATION AND OUTDOOR STATIC PRESSURE SENSOR LOCATION ARE JOB SPECIFIC; CONTACT ENERVEX, INC. AT 800-255-2923.
3. FOLLOW EQUIPMENT MANUFACTURER'S INSTRUCTIONS FOR PROPER INSTALLATION OF CLOTHES DRYERS. THIS PRODUCT IS EQUIPPED WITH AN ELECTRONICALLY COMMUTATED (EC-MOTOR) AND CAN NOT BE CONNECTED DIRECTLY TO AC MAINS. MOTOR MUST BE CONNECTED TO APPROVED MOTOR CONTROLLER TO ENSURE PROPER FUNCTION. FAILURE TO USE APPROVED MOTOR CONTROLLER MAY RESULT IN DAMAGE TO THE MOTOR.
5. DRYER EXHAUST FAN MUST BE LISTED TO UL705 WITH SPECIAL CONSIDERATION FOR LINT LADEN AIR.
6. THE PRESSURE CONTROLLER MAY BE INTERLOCKED WITH UP TO SIX APPLIANCES. (EXPANDABLE TO TEN)
7. FOLLOW VENT MANUFACTURER'S RECOMMENDATIONS FOR CORRECT INSTALLATION METHODS.
8. FOLLOW ALL PERTINENT NATIONAL, STATE, AND LOCAL CODES FOR PROPER INSTALLATION OF EQUIPMENT AND MATERIAL.



1685 Bluegrass Lakes Pkwy  
Alpharetta, GA 30004, USA  
p: 770-587-3238  
info@enervex.com  
www.enervex.com

| DIMENSIONAL TOLERANCES<br>(UNLESS NOTED OTHERWISE) |                |           |       |
|--|----------------|-----------|-------|
| X  | ±.1            | FRACTION  | ±1/8" |
| XX   | ±.05           | ANGLE     | ±2°   |
| XXX  | ±.005          | ROUNDNESS | ±.01  |
| SIZE   | DRAWING NUMBER | REV       |       |
| B  |                | A         |       |